

MS-324-3



MS-324-3

Miniature Reed Sensor Flatpack

Electrical Characteristics @ 25 °C

| | | |
|---------------------------------|--------------------|------------------|
| Contact form | | A |
| Contact rating max. | W / VA | 10 |
| Switching voltage max. | VDC | 200 |
| | VAC | 140 |
| Switching current max. | A | 1 |
| | Carry current max. | A |
| Breakdown voltage min. | VDC | 240 |
| Total resistance max. (initial) | mΩ | 200 |
| Insulation resistance min. | Ω | 10 ¹⁰ |

Features

- Compact size
- Adjustable switching point
- Various sensitivity ranges available
- Customized types available

Magnetical Characteristics (of unmodified Reed Switch) @ 25 °C

| | | |
|--------------------------|------|---------|
| Pull in range available | AT | 10 - 25 |
| Drop out min. | AT | 4 |
| Test coil | TC | 014 |
| Test equipment tolerance | ± AT | 2 |

Approvals



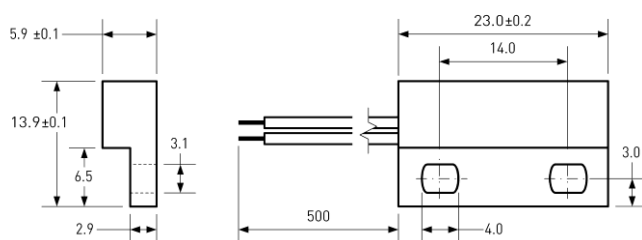
Operating Characteristics (of unmodified Reed Switch) @ 25 °C

| | | |
|----------------------------------|----|------|
| Switching frequency max. | Hz | 500 |
| Resonant frequency typ. | Hz | 4000 |
| Operate time max. (incl. bounce) | ms | 1 |
| Release time max. | ms | 0.4 |

Environmental Characteristics

| | | |
|------------------------|----|------------|
| Operating temperature | °C | -20 to +85 |
| Vibration (50-2000 Hz) | g | 20 |
| Shock (1/2 sin 11 ms) | g | 100 |

Dimensions in mm



Ordering Information

| | |
|--------------------|-----------------|
| Packing Unit | 50 pcs |
| Weight per piece | 5.3 g |
| Weight per package | 270 g |
| Standard AT Ranges | |
| | 1 = 10 to 15 AT |
| | 2 = 15 to 20 AT |
| | 3 = 20 to 25 AT |

Ordering Example

MS-324-3-1 describes MS-324-3 with 10 to 15 AT.

MS-324-3



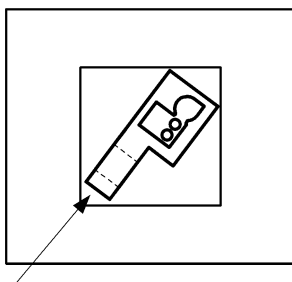
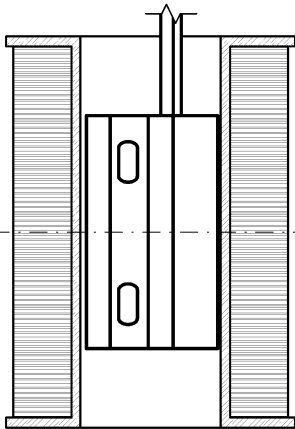
MS-324-3

Miniature Reed Sensor Flatpack

Material Information

| | Material | Colour |
|------------------|--|--------|
| Housing | ABS | black |
| Cable | UL 1007/1569, AWG 24, 4 mm stripped and tinned | black |
| Potting compound | Epoxy | black |

Test Procedure of final Reed Sensor



Test Coil placed in vertical position

Reed Sensor centered in Test Coil

Reed Sensor pushed into opposite corner of Test Coil

Test Parameters

| | |
|---------------|--------------|
| Test coil | TC- 324 |
| Test programs | |
| AT range | Test program |
| 1 = | MS-324-3-1 |
| 2 = | MS-324-3-2 |
| 3 = | MS-324-3-3 |

Remarks

When mounted onto ferromagnetic parts switching distance of MS-324-3 may reduce.
Electromagnetical influences and magnetic fields may change the switching behaviour of the sensor.

Only non-ferromagnetic screws to be used for mounting.

Matching actuator MSM-324 available as well.